

_2019

**KingGee
Catalogue.
Your comfort
zone.**



 **KingGee**
Comfort is King

**Taking
comfort to
new heights.**





Established in Sydney by Mr Robert Adcock, KingGee has been part of Australian and New Zealand history since 1926. The original KingGee overall was born out of humble beginnings and was the first in a long line of work garments known for their quality and careful craftsmanship.

Over the years, KingGee have evolved with the changing needs of the work environment. Today, our passion and expertise are second to none. Our premium products are engineered to ensure comfort, durability and functionality enabling you to work at your best in all conditions. We lead the industrial workwear industry and push the boundaries of garment development to new levels. Workcool Hyperfreeze and the new Tradies Utility Range are just two of our latest innovations.

We have come a long way since our first KingGee overall. One thing has never changed – our pride and care is still seen today in our products and in our people.

CONTENTS

KingGee manifesto	2
Our beliefs	3
The KingGee workings	4
Pants	6
Shorts	8
HiVis shirts	10
HiVis polos	11
Shirts	12
Jackets	13
Women's	14
Footwear	16
Socks	20
High visibility guide	26
UPF ratings	27
Our quality policy	27
Ethical business practices	27
Size guide	28

Turning comfort into a science

We're KingGee. We've ruled over innovation in workwear for almost 100 years.

What inspires us is the creation of new designs that put our wearers into new comfort zones.

What inspires us is engineering the workwear that works best.

Adding cleverness to clothing; adding comfort through science with the marriage of ergonomic body movement with our understanding of the extremes of our sunburnt country.

What defines us is our belief in our heritage underpinning our future.

We're part of the fabric of New Zealand and Australia.

We were there with the farmers, building the bridges, building the tunnels, through the Wars, and the booming construction industry.

What drives us is our pride in being the leaders, being a trustmark, being New Zealanders and being exceptional.

What drives us is being first with breathability, first with cool fabrics, first with stretch fabric.

What drives us is safeguarding and protecting New Zealand's workers, helping them work more efficiently, more effectively, smarter not harder.

What excites us is helping the world of work, work better.

What excites us is what comes next.

For better comfort through better science.

Our beliefs

We believe in knowing what our customers need before they do.

We create tomorrow today.

We deliver safety through science – creating products that can and do save lives.

We are leading the change through innovation.

KingGee is everyone's King.

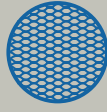
We deliver comfort through technology.

Comfort and quality are our battle cry.



AIRFLOW

Engineered ventilation placed in high heat zones to allow air to flow through to the body, improving breathability and keeping the wearer cool and comfortable.



MESH VENT

Mesh venting in high heat zones improving breathability and keeping the wearer cool and comfortable.



TRIPLE STITCHING

Triple stitching providing increased strength and durability in key stress points.



ANTIMICROBIAL

Antimicrobial finish has been applied to the fabric to minimise odours and inhibit the growth of bacteria, keeping you smelling fresher for longer!



MOISTURE MANAGEMENT

Fabrics designed to keep you dry and comfortable: moisture wicking, quick drying and breathable.



UPF RATING

An Ultraviolet Protection Factor (UPF) rating for Ultraviolet Radiation transmitted through a fabric onto the skin. Look for garments with a UPF 50+ rating to be assured of excellent protection. These garments have been designed to comply with AS/NZS 4399:2017.



ARTICULATED FIT

Engineered to fit and move with you.



RIPSTOP FABRIC

Ripstop fabrics have been woven to be highly tear and rip resistant.



WATER RESISTANT

Garments constructed using highly water resistant fabrics. Not waterproof due to garment seams not being sealed.



DURABLE WATER REPELLENT

Durable water repellent finish sheds water from the garments surface.



REFLECTEC

Material that uses millions of reflective glass beads to reflect light back towards its original source for increased visibility and safety in low light situations.



WATERPROOF

Garments constructed with waterproof fabrics and have been seam sealed to prevent water penetrating the inside of the garment.



HIGH VISIBILITY

This symbol indicates which garments have been designed to comply with AS/NZS 4602.1. These garments give you confidence that you will be visible at work.



REINFORCED

Extra reinforcement fabric has been added to the garment at critical areas for durability.



WIND RESISTANT

Garments constructed using highly wind resistant fabrics. Not windproof due to garment seams not being sealed.



LIGHTWEIGHT

Lightweight fabrics that do not compromise strength or durability.



STRETCH

Built-in stretch providing comfort and freedom of movement



WINDPROOF

Garments constructed with fabric that has a windproof membrane and have been seam sealed to prevent wind penetrating the inside of the garment.



KNEE PAD POCKETS

Provision to hold knee pads in place.



TECHNOTEX

Water, oil and soil repellent finish, helping you stay dry and clean and keeps fabrics and colours looking new for longer.



WRINKLE RESISTANT

Durable fabric finish that reduces the garments tendency to crease, making it easy to care for.





UPF rating
Excellent



Triple stitch
reinforcement

K13290 TRADIE SUMMER PANT

Fabric: Cotton Drill 190gsm

Sizes: 67R–112R, 87S–117S

Colour: Khaki (KHA), Charcoal (CHA), Oiled Navy (ONV), Black (BLA)

Narrow fit pant

12 Multifunctional pockets

Light enzyme wash for instant comfort



UPF rating
Excellent



Triple stitch
reinforcement

K13280 TRADIE CANVAS PANT

Fabric: Cotton Canvas 280gsm

Sizes: 72R–112R, 87S–117S

Colour: Khaki (KHA), Charcoal (CHA), Oiled Navy (ONV), Black (BLA)

Narrow fit pant

12 Multifunctional pockets

Light enzyme wash for instant comfort



UPF rating
Excellent



Stretch
fabric



Articulated
fit

K69865 TRADIES ELASTIC HEM PANTS

Fabric: 60% Cotton 38% Polyester 2% Elastane 260gsm

Sizes: 77R–112R

Colours: Clay (CLY), Military Green (MLG), Black (BLA), Navy (NAV)

Straight fit with tapered leg

Gusseted crotch for improved mobility



UPF rating
Excellent



Ripstop
fabric



Airflow
technology



Triple stitch
reinforcement

K13820 WORKCOOL 2 PANTS

Fabric: Cotton Ripstop 235gsm

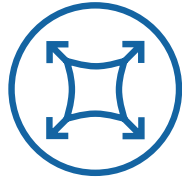
Sizes: 72R–112R, (Navy 72R–112R, 92S–112S)

Colours: Khaki (KHA), Charcoal (CHA), Navy (NAV), Black (BLA)

Modern contoured fit

Behind the knee cooling vents

Ten multifunctional pockets



Comfort stretch waistband

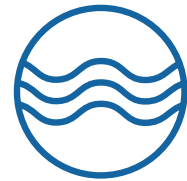
Crotch gusset for improved movement



Stretch Ripstop fabric for improved movement and durability



9 Multifunctional pockets



Behind the knee cooling vents

K13026 WORKCOOL PRO PANTS

Fabric: 98% Cotton Ripstop 2 % Elastane 237gsm
 Sizes: 67R–112R, 92S–132S
 Colours: Khaki (KHA), Navy (NAV), Black (BLA)
 Comfort stretch waistband with gel grip print
 Stretch Ripstop fabric for improved movement and durability
 Crotch gusset for improved movement
 Behind the knee cooling vents
 9 Multifunctional pockets



UPF rating Excellent



Ripstop fabric



Airflow technology



Stretch fabric

_Pants and shorts



UPF rating
Excellent



Ripstop
fabric



Airflow
technology



ReflectEC



Triple stitch
reinforcement



UPF rating
Excellent



Triple stitch
reinforcement

K53820 WORKCOOL 2 REFLECTIVE PANTS

Fabric: Cotton Ripstop 235gsm

Sizes: 77R–112R, 92S–132S

Colours: Navy (NAV)

Modern contoured fit

Behind the knee cooling vents

Ten multifunctional pockets

K17340 TRADIE SUMMER SHORT

Fabric: Cotton Drill 190gsm

Sizes: 72R–112R,

Colour: Khaki (KHA), Charcoal (CHA), Oiled Navy (ONV), Black (BLA)

12 Multifunctional pockets

Light enzyme wash for instant comfort



UPF rating
Excellent



Ripstop
fabric



Triple stitch
reinforcement

K17820 WORKCOOL 2 SHORTS

Fabric: Cotton Ripstop 235gsm

Sizes: 72R–117R

Colours: Khaki (KHA), Charcoal (CHA), Navy (NAV), Black (BLA)

Modern contoured fit

Ten multifunctional pockets



Gel shirt grip print in waistband

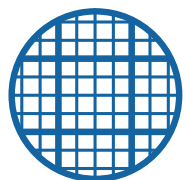
Crotch gusset for improved movement

9

9 Multifunctional pockets



Comfort stretch waistband



Stretch Ripstop fabric for improved moment and durability

K17006 WORKCOOL PRO SHORTS

Fabric: 98% Cotton Ripstop 2 % Elastane 237gsm

Sizes: 67R-127R

Colours: Khaki (KHA), Navy (NAV), Black (BLA)

Comfort stretch waistband with gel grip print

Stretch Ripstop fabric for improved moment and durability

Crotch gusset for improved movement

9 Multifunctional pockets



UPF rating Excellent



Ripstop fabric



Stretch fabric

_Safety shirts / overall



TTMC compliant



UPF rating Excellent



High visibility Day/Night



ReflectTEC



Ripstop fabric

N1SU00 KINGGEE TTMCC COTTON SHIRT

Fabric: 145gsm, cotton open-mesh & lightweight breathable ripstop

Sizes: XS-6XL

Colours: Fluoro Orange/Navy (FON)

AS/NZS 4602.1:2011, CLASS D/N

Underarm cooling mesh vents

Back cooling vents



UPF rating Excellent



High visibility Day/Night



Airflow technology



Ripstop fabric



ReflectTEC

K54880 WORKCOOL 2 HI VIS REFLECTIVE SPLICED SHIRT LONG SLEEVE

Fabric: Cotton Ripstop 145gsm

Sizes: XS-5XL

Colours: Orange/Navy (ONA), Yellow/Navy (YNA), Yellow/Black (YBL)

Lightweight breathable fabric

Underarm, upper back and side cooling vents

Three piece collar with extension for added sun protection



TTMC compliant



UPF rating Excellent



High visibility Day/Night



ReflectTEC



Ripstop fabric

N1OU00 KINGGEE TTMCC COTTON OVERALL

Fabric: 235gsm, 100% cotton ripstop twill and cotton open mesh

Sizes: 3-15

Colours: Fluoro Orange/Navy (FON)

Underarm cooling vents & back cooling vents

Contrast collar

Knee darts

Quality retro-reflective tape 50mm wide



UPF rating Excellent



High visibility Day/Night



Airflow technology



Ripstop fabric



ReflectTEC

K54885 WORKCOOL 2 HI VIS REFLECTIVE SPLICED SHIRT SHORT SLEEVE

Fabric: Cotton Ripstop 145gsm

Sizes: S-4XL

Colours: Orange/ Navy (ONA), Yellow/Navy (YNA)

Lightweight breathable fabric

Underarm, upper back and side cooling vents

Three piece collar with extension for added sun protection



UPF rating
Excellent



High visibility
Day/Night



ReflectTEC



High visibility
Day



Airflow
technology



Mesh
venting

K54225 WORKCOOL HYPERFREEZE SPLICED POLO LONG SLEEVE WITH SEGMENTED TAPE

Fabric: 100% Polyester 165gsm

Sizes: S-3XL

Colours: Orange/Navy (ONA), Yellow/Navy (YNA)

Hyperfreeze fabric finish for added cooling

Flat seam construction for next to body comfort

K54840 WORKCOOL SPLICED POLO LONG SLEEVE

Fabric: 100% Polyester 170gsm

Sizes: S-4XL

Colours: Yellow/Navy (YNA), Orange/Navy (ONA)

Hyperfreeze fabric finish for added cooling

Side mesh panels for increased airflow and cooling.

Flat seam construction for next to body comfort



UPF rating
Excellent



High visibility
Day/Night



ReflectTEC



High visibility
Day



Airflow
technology



Mesh
venting

K54215 WORKCOOL HYPERFREEZE SPLICED POLO SHORT SLEEVE WITH SEGMENTED TAPE

Fabric: 100% Polyester 165gsm

Sizes: S-3XL

Colours: Orange/Navy (ONA), Yellow/Navy (YNA)

Hyperfreeze fabric finish for added cooling

Chest pocket with button closure

Flat seam construction for next to body comfort

K54845 WORKCOOL SPLICED POLO SHORT SLEEVE

Fabric: 100% Polyester 170gsm

Sizes: S-4XL

Colours: Yellow/Navy (YNA), Orange/Navy (ONA)

Hyperfreeze fabric finish for added cooling

Side mesh panels for increased airflow and cooling.

Flat seam construction for next to body comfort



UPF rating
Excellent



Airflow
technology



Ripstop
fabric



UPF rating
Excellent

K14820 WORKCOOL 2 SHIRT LONG SLEEVE

Fabric: Cotton Ripstop 145gsm

Sizes: 2XS-4XL

Colours: Khaki (KHA), Charcoal (CHA)

Lightweight breathable fabric

Underarm and upper back cooling vents

Three piece collar with extension for added sun protection

Roll up sleeve with tab and button to secure

K14350 TRADIE SHIRT LONG SLEEVE

Fabric: Cotton Twill 145gsm

Size: S-4XL

Colour: Black (BLA), Khaki (KHA), Oiled Navy (ONV)

Slim fit, shorter length shirt

Lightweight breathable fabric

Back box pleat for added movement

Light enzyme wash for instant comfort



UPF rating
Excellent



Airflow
technology



Ripstop
fabric



UPF rating
Excellent

K14825 WORKCOOL 2 SHIRT SHORT SLEEVE

Fabric: Cotton Ripstop 145gsm

Sizes: 2XS-4XL

Colours: Khaki (KHA), Charcoal (CHA)

Lightweight breathable fabric

Underarm and upper back cooling vents

Three piece collar with extension for added sun protection

K14355 TRADIE SHIRT SHORT SLEEVE

Fabric: Cotton Twill 145gsm

Size: S-4XL

Colour: Khaki (KHA), Oiled Navy (ONV), Black (BLA)

Slim fit, shorter length shirt

Lightweight breathable fabric

Two angled chest pockets with stud closures

Back box pleat for added movement

Light enzyme wash for instant comfort



UPF rating
Excellent



Ripstop
fabric



Durable water
repellent



Water
resistant



Wind
resistant



ReflectTEC

K05002 HI VIS SOFTSHELL JACKET

Fabric: 100% Polyester Ripstop with PU membrane 310gsm, Grid fleece backing

Size: XS-6XL

Colour: Orange/Navy (ONA), Yellow/Navy (ONA)

Adjustable cuff and hem for customised fit

K15001 HYBRID PUFFER JACKET

Fabric: Cotton main body 270gsm, 320gsm Poly Cotton Fleece

Size: S-4XL

Colour: Black (BLA)

Durable water repellent finish to shed water

Internal collar stand for comfort and warmth

Polyester lining in main body for warmth



Durable water
repellent finish to
shed water

Internal collar
stand for comfort
and warmth

Polyester lining
in main body
for warmth



UPF rating
Excellent



Ripstop
fabric



Airflow
technology



- UPF rating
Excellent
- Ripstop
fabric
- Airflow
technology
- ReflecTEC
- Triple stitch
reinforcement



K43825 WOMEN'S WORKCOOL 2 REFLECTIVE PANTS

Fabric: Cotton Ripstop 235gsm
Sizes: 6-24
Colours: Navy (NAV)
Modern contoured fit
Behind the knee cooling vents
Ten multifunctional pockets



- UPF rating
Excellent
- Ripstop
fabric
- Airflow
technology
- Triple stitch
reinforcement



- UPF rating
Excellent
- Ripstop
fabric
- Triple stitch
reinforcement

K43820 WOMEN'S WORKCOOL 2 PANTS

Fabric: Cotton Ripstop 235gsm
Sizes: 6-24
Colours: Navy (NAV)
Modern contoured fit
Behind the knee cooling vents
Ten multifunctional pockets

K47000 WOMEN'S WORKCOOL SHORTS

Fabric: Cotton Ripstop 235gsm
Sizes: 6-20
Colours: Navy (NAV), Khaki (KHA)
Durable Ripstop Fabric
Modern contoured fit
Ten multifunctional pockets



UPF rating
Excellent



High visibility
Day

K44730 WOMEN'S WORKCOOL HYPERFREEZE SPLICED POLO LONG SLEEVE

Fabric: 100% Polyester 165gsm

Sizes: XS-3XL

Colours: Orange/Navy (ONA), Yellow/Navy (YNA)

Hyperfreeze fabric finish for added cooling

Flat seam construction for next to body comfort



UPF rating
Excellent



Airflow
technology



Ripstop
fabric

K69880 WOMEN'S WORKCOOL 2 SHIRT LONG SLEEVE

Fabric: Cotton Ripstop 145gsm

Sizes: 6-24

Colours: Charcoal (CHA), Navy (NAV), Khaki (KHA)

Lightweight breathable fabric

Two secure chest pockets, with pen partition

Underarm and upper back cooling vents

Three piece collar with extension for added sun protection



UPF rating
Excellent



High visibility
Day

K44735 WOMEN'S WORKCOOL HYPERFREEZE SPLICED POLO SHORT SLEEVE

Fabric: 100% Polyester 165gsm

Sizes: XS-3XL

Colours: Orange/Navy (ONA), Yellow/Navy (YNA)

Hyperfreeze fabric finish for added cooling

Flat seam construction for next to body comfort



UPF rating
Excellent



Airflow
technology



Ripstop
fabric

K44205 WOMEN'S WORKCOOL 2 SHIRT SHORT SLEEVE

Fabric: Cotton Ripstop 145gsm

Sizes: 6-24

Colours: Charcoal (CHA), Navy (NAV), Khaki (KHA)

Lightweight breathable fabric

Underarm and upper back cooling vents

Three piece collar with extension for added sun protection



Electrical hazard EH



Composite toe cap



Heat resistant sole



Lightweight



Women's specific fit



Heat resistant sole



Composite toe cap



Airport friendly



Lightweight



Women's specific fit



Electrical hazard EH



WOMEN'S TRADIE 130MM (5 INCH) SIDE ZIP



Sizes: AU/US 4-11 (5.5-10.5)

Colour: Wheat (K27380), Teal (K27370), Black (K27360)

Water Resistant Full Grain Leather

8 Gauge YKK® coil zip

Breathable & Light Oxford fabric tongue

Additional under foot Phylon Interlayer

Gel Technology sports performance footbed

Cushioned EVA midsole

Durable Rubber outsole

Certified to AS/NZS 2210.3:2010

EH tested to the ASTM F2413-11 (American Standard)



WOMEN'S TRADIE GUSSET



Sizes: AU/US 4-11 (5.5-10.5)

Colour: Black (K27390)

Water Resistant Full Grain Leather

Additional under foot Phylon Interlayer

Gel Technology sports performance footbed

Cushioned EVA midsole

Durable Rubber outsole

Strong breathable mesh lining

Certified to AS/NZS 2210.3:2010

EH tested to the ASTM F2413-11 (American Standard)



Heat resistant sole



Composite toe cap



Airport friendly



SRC slip resistance



Women's specific fit



Lightweight

WOMEN'S COMP-TEC SPORT SAFETY G3



Sizes: AU/US 5-10 (Full Sizes Only)

Colour: Pink/Grey (K26600), Black (K26600)

Leather Trims with Breathable mesh upper

Shock Absorbing EVA midsole

Abrasion resistant rubber toe bump

Removable Contoured PU and Gel Footbed

Reflective Heel Panel

Certified to AS/NZS 2210.3:2009





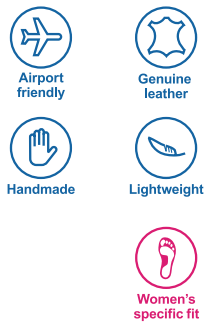
WOMEN'S SUPERLITES LACE-UP

Sizes: AU/US 4–11 (5.5–10.5)
 Colour: Black (K22300)
 Water resistant soft full grain leather
 Ultra comfort footbed
 Rated SRC Max slip resistant
 Lightweight running shoe construction



WOMEN'S SUPERLITES SLIP-ON

Sizes: AU/US 4–11 (5.5–10.5)
 Colour: Black (K22340)
 Water resistant soft full grain leather
 Ultra comfort footbed
 Rated SRC Max slip resistant
 Lightweight running shoe construction



WOMEN'S URBAN DRESS BOOT

Sizes: AU/US 5–11 (6.5–10.5)
 Colour: Black (K22222)
 Full Grain Leather Upper
 Littleway stitched technology
 Leather lining and sock
 Leather sole with rubber non-slip pad
 Stacked leather veneer heel



- Wellmax® puncture protection
- Steel cap
- Anti-static
- Heat resistant sole
- ARZ+ pad technology
- Memory footpad

TRADIE PUNCTURE RESISTANT 130MM (5 INCH)



Sizes: AU/UK 6–14

Colour: Wheat (K27125), Black (K27175)

- Wellmax® puncture resistant plate
- Leather & Breathable Nylon Upper
- YKK® 10 Gauge Coil Zipper
- Cosmo® Lunar lining with Aegis® Anti-Microbial
- TPU toe bump
- TPU Outsole, PU Midsole
- PU/Memory Foam Footbed
- Certified to AS/NZS 2210.3:2009



- Anti-static
- Steel cap
- ARZ+ pad technology
- Heat resistant sole
- Oil & slip resistant
- Memory footpad

TRADIE 130MM (5 INCH) SIDE ZIP



Sizes: AU/UK 6–14 (7.5–10.5)

Colour: Wheat (K27100), Black (K27150)

- Leather & Breathable Nylon Upper
- YKK® 10 Gauge Coil Zipper
- Dri-Lex® lining with Aegis® Anti-Microbial
- TPU toe bump
- TPU Outsole, PU Midsole
- PU/Memory Foam Footbed
- Certified to AS/NZS 2210.3:2009



- Anti-static
- Steel cap
- Oil & slip resistant
- Memory footpad
- ARZ+ pad technology
- Heat resistant sole

TRADIE GUSSET



Sizes: AU/UK 6–14

Colour: Wheat (K25200), Black (K25250)

- Full Grain Leather Upper
- PU / Memory foam footbed
- Dri-Lex® lining with Aegis® Anti-Microbial
- TPU toe bump
- Extra long pull on loops
- TPU Outsole, PU Midsole
- Certified to AS/NZS 2210.3:2009



- Airport friendly
- Genuine leather
- Handmade
- Lightweight

URBAN DRESS BOOT

Sizes: Black: AU/UK 6–16 (7.5–13.5), Brown: AU/UK 6–14 (7.5–10.5)

Colour: Black (K22500), Brown (K22550)

- Soft Full Grain polished leather
- Full leather lining and sock
- Leather sole with rubber grip pad
- Stacked leather veneer heel
- Little way stitched technology



OLLIE LACE-UP NON-SLIP SOFT TOE

Unisex Sizes: AU/UK 4–11 (Full sizes only)
 Unisex sizing, refer to fitting guide for women's size conversions
 Colour: Black (K22900)
 Water resistant leather upper
 Cotton Drill Lining
 Cushioned innersoles
 Heat Resistant Outsole



X-GRIP LACE-UP SOFT TOE NON-SLIP SPORTS



Sizes: AU/UK 6–13 (Full sizes only)
 Colour: Black (K22800)
 Padded collar for comfort
 Removable cushioned PU insoles
 Stitch-reinforced toe
 Airport friendly
 Enhanced heel counter for more support
 Water Resistant Leather
 Certified to AS/NZS 2210.5:2009 Occupational Protective Footwear



COMPTEC SPORT SAFETY G40, G41, G42

Sizes: AU/UK 6–15 (Full sizes only)
 Colour: Black (K26455), Black/Lime (K26460), Black/Orange (K26465)
 Super Lightweight Running Shoe Construction
 Memory foam footbed with Energy Rebound Pods
 Rubber sole
 Unique Tri Density PU Mid-Sole
 Breathable Mesh upper
 Anti-static
 Certified to AS/NZS 2210.3:2009





MEN'S CREW 5 PACK WORKSOCK

Size Men's: AU/UK 7-12
Colours: Multi (5 different colour socks in each pack)
Style: Men's Crew (K09035)
80% cotton / 17% Polyester / 3% Elastane
Athletic design
Padded footbed
Seam-free toe
Crew cut for use in boots



MEN'S ANKLET 5 PACK WORKSOCK

Size Men's: AU/UK 7-12
Colours: Multi (5 different colour socks in each pack)
Style: Men's Anklet (K09030)
80% cotton / 17% Polyester / 3% Elastane
Athletic design
Padded footbed
Seam-free toe
Anklet for jogger style footwear



MEN'S BAMBOO WORK SOCKS

Sizes: AU/UK 6-10 & 11-14
Colours: Khaki (KHA), Red (RED), Olive (OLI), Denim (DEN), Navy (NAV), Black (BLA) (K09270)
80% Bamboo Viscose / 17% Nylon / 3% Elastane
Comfort seam free sock
Renewable resource making it an environmentally friendly choice
Ultra-Violet protective properties
Breathable





APODC ENDORSED

KingGee Footwear and APODC are working together to deliver improved comfort and foot health for all of our end users. Footwear showing this logo have been tried, tested and recommended by experts.



DUAL DENSITY PU/TPU OUTSOLE

Polyurethane (PU) provides an excellent balance of shock absorption (cushioning) and energy return (rebound). Thermoplastic Polyurethane (TPU) has many useful properties including elasticity and resistance to most oil, grease and abrasion, as well as 130° Celsius heat resistance.



MET GUARD

Poron™ XRD™ Extreme Impact Protection material is a breakthrough technology. Extreme impact protection from a moulded pad stretching from the tongue to the steel cap. Contoured, breathable and flexible allowing ease of motion for comfort & fit whilst protecting the metatarsal. Tested in accordance to ASTM F 2413-11.



ACHILLES FLEX

Accordion-style flex point in the Achilles area allows the boot to flex. It's unique design allows the foot to flex forward when crouching and backward when changing gears in a car/truck preventing any pain and restriction in movement from the Achilles tendon.



ELECTRICAL HAZARD EH

Electrical hazard footwear is specifically designed and tested to insulate the wearer from electrical hazards, to reduce the flow of electricity. EH Footwear has been tested to the requirements of ASTM F2413-11. EH shoes should not be used as the primary source of protection in an electrical hazard environment.



OIL & SLIP RESISTANT

Sole resistant to fuel oil and rated to SRA slip resistance which is tested using water on ceramic tile.



AIRPORT FRIENDLY

Airport friendly boots feature non-metallic components. Plastic shanks are used in manufacture together with the use of a composite safety cap ensure KingGee footwear meets AS/NZS 2210.3:2009 safety standards.



GENUINE LEATHER

KingGee boots are made using the finest quality leathers that mould to the shape of your feet allowing your feet to "breathe".



ORGANIC FAT AND OIL RESISTANT

Sole resistant to organic fats and oils.



ANTI-STATIC

Boots with Anti-Static properties are designed to reduce the build up of excess static electricity by conducting body charge to the ground. This offers a level of protection against ignition hazards such as flammable materials and gasses.



HAND MADE

This shoe is made by hand using quality materials and time-honoured traditional shoe making skills.



PROTECTIVE TPU TOE BUMPER

Protective Thermoplastic Polyurethane (TPU) toe and heel bumpers provide further abrasion resistance.



ARZ+™ PAD TECHNOLOGY

Anatomical Rebound Zone (ARZ+) with an expandable polymer that provides excellent cushioning and rebound. ARZ+ heel protection difference is apparent at heel strike the soft contouring material dissipates force upon impact.



LIGHTWEIGHT

KingGee footwear incorporate safety toe caps in a contemporary yet durable design which feels lightweight on the wearer's foot.



RUBBER OUTSOLE

Rubber offers 300° Celsius (572°F) heat resistance. Rubber has excellent resistance to oils, acids and is naturally resistant to hydrolysis.



COMPOSITE TOE CAP

Composite safety toe caps provide the same level of protection as that afforded by steel toe caps tested under AS/NZS 2210.3:2009 (200 Joules) standards, with the added benefit of being non-conductive and are up to 30% lighter than a steel toe cap.



MEMORY FOAM FOOTBED

Sensitive to pressure and moulds perfectly around the contours of your foot. The PU bottom layer provides permanent cushioning and shock absorption.



STEEL CAP

Designed to withstand a force of 200J (Joules) and compression resistance of 1.5 ton. Ethylene Vinyl Acetate (EVA) protective cap liner for added comfort and steel cap protective liner to ensure toes are comfortable and not in contact with the protective safety cap.



SRC SLIP RESISTANCE

SRC offers the most superior slip resistance for all surfaces. (Tested on both ceramic tile floor with SLS solution and steel floor with glycerol).



AGION®

Agion® branded antimicrobial technology makes products cleaner and longer lasting with silver, copper and zinc, which have been proven in use throughout history. Agion® anti-microbial technology provides built in protection by working 24/7 resisting the growth of microbes.



KEVLAR®

DuPont™ Kevlar® aramid fibre is used due it being lightweight, heat resistant and extraordinarily strong, with 5 times the strength of steel on an equal-weight basis. It is about 2.5 times stronger than nylon and polyester, has almost no stretch, does not melt, and decomposes at 800°F.



WATER RESISTANT

Water resistant footwear will repel water so that it soaks in more slowly and are best used when walking through dew or occasionally damp areas.



BOA®

A closure system of steel Lace, nylon guides and a mechanical reel. Improved level of comfort along with durability, light weight, fast and convenient operation, and on-the-fly adjustment.



OUTLAST®

Outlast® technology, originally developed for NASA, utilizes phase change materials (PCM) that absorb, store and release heat for optimal thermal comfort. Outlast® technology will proactively manage heat while controlling the production of moisture before it begins. That's the Outlast® difference.



WELLMAX® PUNCTURE PROTECTION

WELLMAX® anti-penetration is a non-metallic, flexible plate Tested and compliant with EN ISO 20345, EN12568 and CSA Z195-02 Standards. The high tech ceramic coated fibres offer greater comfort, lightness, thermal insulating properties and flexibility compared to steel plates.



BENCHMARK®

All KingGee footwear showing this logo is certified to AS/NZS 2210.3:2009 meeting all Benchmark® requirements under the Australian and New Zealand standards.



PORON™ XRD™

Extreme impact protection pad is durable, lightweight and comfortable. Poron™ XRD™ is designed to withstand multiple hits over time and not break down.



WIDE SAFETY TOE CAP

Wide profile toe cap provides more comfort. All our footwear complies with Australian and New Zealand Standards AS/NZS 2210.3:2009.



COSMO™

- Highly abrasion resistant lining
- Keeps you dry and comfortable
- Quick drying hi-tech



YKK®

World leader in the manufacture of fastening systems. YKK® Coil zipper is extremely strong and lightweight, has excellent heat resistance (up to 360°F/ 182°C) and resistance to cold (down to -60°F/ -51°C). Resistance to chemicals further extends the use of YKK® beyond the scope of conventional metal zippers.



DRI-LEX® LINING

Dri-Lex® lining treated with Aegis® anti-microbial. A patented superior mesh designed to manage moisture within a boot environment.

- Wicks away moisture
- Allows your feet to breathe
- Keeps your feet dry
- Keeps your feet cool



Our workboots have been engineered to provide maximum comfort. After careful study of the Australian foot anatomy we have designed KingGee boots with a wider last, sole & toe cap. We are so confident you will love these boots that they come with a 30 day comfort guarantee.

_Built to fit footwear

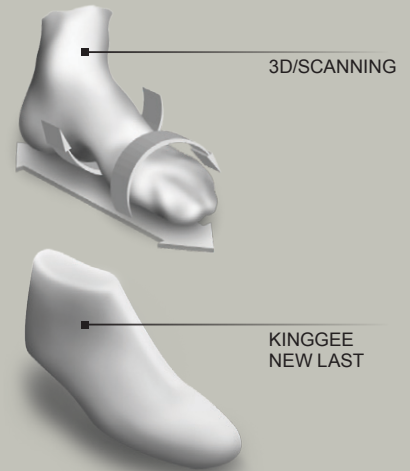
- 1 WIDE STEEL TOE CAP**
For protection & comfort
- 2 DRI-LEX™ LINING WITH AEGIS™ ANTI-MICROBIAL**
Keeps your feet cool and dry
- 3 LIGHTWEIGHT SOFT PU**
For long-term comfort
- 4 ARZ+™ TECHNOLOGY INC. PORON™ XRD™ PAD**
Provides superior shock absorption
- 5 RECYCLED WOVEN FABRIC**
For insulation
- 6 PU MIDSOLE**
For maximum cushioning
- 7 TPU OUTERSOLE**
Provides fuel oil, heat (up to 130°C) and slip resistance



_Built to fit story

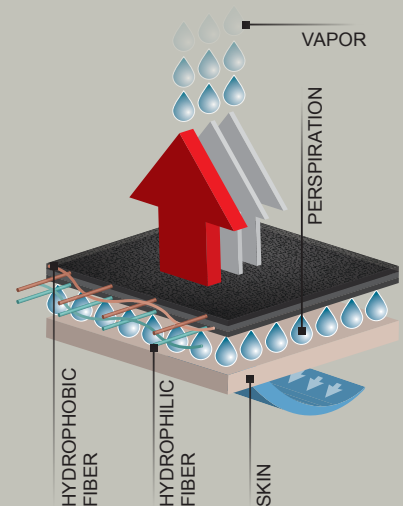
3D-SCANNING

A last gives the volume inside a boot and therefore is essential for comfort and fit. Ours has been designed by one of Australia's most experienced last-makers. For over 35 years he has been measuring and recording Australian foot dimensions. The use of 3D scanning, his extensive database and expertise have all been instrumental in providing KingGee with a last that best fits the Australian foot.



DRI-LEX™ LINING

A superior mesh, designed to manage moisture within a boot environment. It keeps the foot surface dry and comfortable no matter the climate. The hydrophilic action in Dri-Lex™ fabrics works through a combination of absorption, wicking and rapid drying capabilities. This lining is also treated with Aegis™ anti-microbial to reduce odour formation caused by bacteria.



DRI-LEX®

AUSTRALIAN AND NEW ZEALAND SAFETY STANDARD – AS/NZS 2210.3:2009

Every safety boot sold in Australia has to pass the latest Australia and New Zealand Standards for protective and occupational footwear (currently AS/NZS 2210.3:2009).

Each style must be tested by an independent and authorised laboratory and then certified by a worldwide recognised organisation where each component of the boot is tested (fabric, sole, thread, lining, etc.).

BONDING TEST

Measures the force required to separate the upper from the sole unit or to separate different layers within the sole unit, i.e. separate midsole from outsole. Material tearing is part of the assessment when the force required to tear the material itself apart is lower than the bonding strength between two different materials and also lower than the bonding requirement then material failure will occur.

COMPRESSION TEST

This test measures the resistance of a toe cap being compressed by an upper plate with a pressing force 15kN = 1.5ton. The clearance between the toes and the toe cap must be over 12.5mm or 15mm depending on sizes.

IMPACT TEST

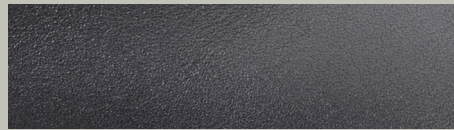
Each toe cap has to pass the impact resistance test explained in the standard AS/NZS 2210.3:2009. After the drop of a 20kg striker with a force of 200J, the clearance between your toes and the toe cap must be between 12.5mm to 15mm depending on sizes.

Our KingGee boots are made with attention to detail using the finest quality leathers that mould to the shape of your feet allows your feet to “breathe”.

Leather is a natural material that is made from animal hide that has been tanned. It is among the oldest of human inventions. In ancient times, the gatherers and hunters used leather as their protective clothing and for warmth.

KingGee cowhide leather is flexible, breathable and supple. Cowhide leather looks good dyed or left natural. It's durable, ages well and lasts up to five times longer than fabric.

Its properties of toughness and tear and puncture resistance are the reason it is used in our boots. It naturally repels moisture, retains its shape, and resists sun and heat damage.

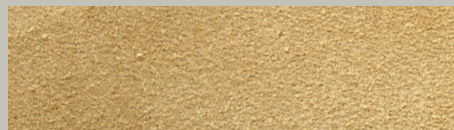


FULL-GRAIN LEATHER

KingGee full-grain leather workboots use cow hides which are not sanded or buffed, and are naturally tanned resulting in the hides having excellent breathability and a true softness in the leather.

Owing to the fact that this type of leather is not sanded, the natural marks on the hide are sometimes visible. Most people prefer this natural finish.

KingGee full-grain leather is very reliable and strong. This is because the grain has not been removed. Thus the fibre strength and the toughness of the hide are still retained in the leather. Full-grain leather does not wear out; instead a patina will be developed over time. Full-grain leather also has better breathability than other types of leather. Owing to the strength of this type of leather, it is used in the production of KingGee workboots.



SUEDE LEATHER

KingGee suede leathers are sanded to produce the velvet-soft feel that is typical of high-grade suede. This feel is achieved by sanding the inner layer of the cow hide.

Because it comes from a thinner piece of hide, suede is less durable than full-grain leather. The suede texture of the material also makes it more susceptible to damage from water and stains. However, because several pieces of suede can be produced from a single hide, it is less expensive than full-grain leather.

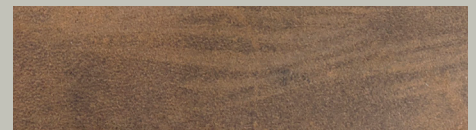


NUBUCK LEATHER

KingGee Nubuck leather has a soft, velvety surface and is the premium choice in leather. Nubuck is sanded on the outer surface of the leather, essentially the part that would have been the exterior skin of the animal.

Since the outside layer of a skin is much tougher, Nubuck lasts much longer than suedes and responds very well to this sanding process. It does show imperfections in the exterior layer of the skin much more easily, and is often treated with dyes, sometimes simply clear ones, to disguise any significant flaws.

Nubuck is subject to easy staining and often requires pre-treatment or stain-resistance protection to extend its life.



CRAZY HORSE LEATHER

Crazy Horse Leather is sometimes known as “saddle leather” and is treated with oil and wax in a unique tanning process to the surface of the leather. During this process, the oil and wax surface to create a rich, beautiful patina that's fade-resistant. When the leather is rubbed, the colour will change and will not immediately reverse, giving it an antique look.

_TTMC and Hi-Visibility Standards



HIGH VISIBILITY DAY COMPLIANT

K54870 Workcool 2 Spliced Shirt Long Sleeve



HIGH VISIBILITY NIGHT COMPLIANT

K54880 Workcool 2 Hi Vis Reflective Shirt Long Sleeve



HIGH VISIBILITY TTMC COMPLIANT

N1SU00 TTMC Cotton Shirt

FOR TTMC-W GARMENTS ONLY

In addition to the limitations for use for high visibility garments:

- Fabric has been tested to AS/NZS 1906.4: 2010 both dry and wet so will be compliant when worn in the rain. This applies to all fabrics used for TTMC garments.
- Garment compliance is based on size to fit body chest measurement of 100–105cm. Extra small garments are permitted but this will provide reduced visibility. Where practicable wearers should avoid work in high risk areas and be alerted to the potential hazards resulting from its lower visibility.

HI-VISIBILITY STANDARDS

KingGee high visibility workwear meets or exceeds Australian and New Zealand Standards AS/NZS 4602.1.

According to the New Zealand and Australian Standards, materials classified as high visibility for daytime use must be manufactured from a durable fabric of woven or knitted cotton or equivalent man-made fibre that contains a fluorescent pigment or other high visibility dye. These materials are subjected to the following tests and must meet or exceed specified minimum requirements for:

- Daylight colour and luminance factor
- Colour fastness to light
- Colour fastness to washing
- Colour fastness to perspiration

In some cases, for safety reasons, a garment must be made from a natural fibre incapable of retaining a fluorescent colour. In these instances, the material is tested for luminance for non-fluorescent materials. Alternatively, man-made fibres are generally capable of retaining a fluorescent colour and are therefore tested

for luminance for fluorescent materials. The fabrics used in the manufacture of KingGee high visibility workwear are tested and must meet or exceed specified minimum requirements for:

- Chromaticity
- Luminance for fluorescent materials or
- Luminance for non-fluorescent materials

Things to know about high visibility standards:

- Class D means the garments meets AS/NZS 4602.1 for daytime use only.
- Class N means the garments meets AS/NZS 4602.1 for night time use only.
- Class D/N means the garments meets AS/NZS 4602.1 for day or night time use.
- Bottoms (pants and shorts) are not part of the high visibility standards and therefore do not comply with AS/NZS 4602.1.

IMPORTANT: LIMITATIONS OF USE.

Under no circumstances should Class D garments be worn for visibility purposes at night. Any markings, attachments, screen prints or other alterations, accessories or coverings not incorporated into the original product may not only void the garment compliance with the appropriate standard, they may also put the user at risk by reducing the high visibility area of the garment. The high visibility properties offered by KingGee high visibility may be lessened due to normal wear over time. KingGee high visibility garments using natural fibres have been tested and comply to Australian Standards AS/NZS 4602.1 in dry conditions. Wet conditions may alter the compliance of these fabrics to the standard and appropriate care should be taken.

Garments are classified based on the ultraviolet protection factor (UPF). The UV protection of fabric depends on the content, weave, density and colour. UPF rates how effectively a piece of clothing shields against the sun. It is based on the content, weight, colour of the fabric and indicates how much UV can penetrate the fabric. For instance, a shirt with a UPF of 50 allows just 1/50th of the sun's UV radiation to reach your skin.

The UPF rating is for the fabric and does not address the amount of protection which is afforded by the design of the article. The manipulation involved in garment manufacture such as stretching and sewing may lower the UPF of the material. Articles which have been designed to cover the maximum area of the body are recommended.

The protection offered by garments may be lessened:

1. at points where the fabric is in close contact with the skin such as across the shoulders;
2. if the fabric is stretched;
3. if the fabric is wet; and
4. with time, due to the effects of normal wear. Fabric has been rated in accordance to AS/NZS 4399:1996.

We understand work can be demanding and stressing at times. KingGee garments are designed to facilitate your everyday.

Our Design and Quality departments spends a lot of effort to make sure KingGee products are comfortable, functional and presentable for as long as possible.

- All fabrics are systematically tested by a third party laboratory for tear force, breaking force and colour fastness.
- All shades are carefully controlled in a light box to ensure the consistency of your uniforms.
- All new products introduced in the market place are wear tested with real workers prior to the launch.
- All marketing claims are systematically tested and part of the product specifications.

KingGee, a brand under Workwear Group, continuously review standards and trends within the industry and are constantly pushing the boundaries so that customers are getting quality products that are both safe and fashionable. Quality is paramount in KingGee and we will never sacrifice it. KingGee products comply with:

- High Visibility New Zealand and Australian Standards Compliant AS/NZS 1906.4 & AS/NZS 4602.1
- UPF New Zealand and Australian Standard AS/NZS 4399:1996
- Boots – Safety Footwear Standard AS/NZS 2210.3:2009 & AS/NZS 2210.5: 2009

Workwear Group, who owns KingGee, achieves the highest workplace standards.

New Zealand and Australian Standards Compliance AS/NZS ISO 9001:2015 Quality Management System

ISO 9001 – QUALITY MANAGEMENT SYSTEMS

ISO 9001 is a quality management system (QMS) standard that requires an organisation to meet it's own requirements and those of it's customers and regulators. It is based on the plan-do-check-act methodology, which helps organisations establish, implement, monitor and measure their processes to deliver results that align with the organisation's requirements and continually improve performance by taking appropriate action.

ETHICAL COMPLIANCE

KingGee, as a brand under Workwear Group and a division of Wesfarmers Industrials Group, is a recognized leader in managing design, development and supply chains globally, as such we are committed to working with our supply partners to continuously improve ethical business practices through engaging with the partners to deliver sustainable solutions.

We proactively promote responsible behaviour in our supply chain to protect our brands and the well-being of workers/their communities in the factories we work with.

We hold our suppliers accountable in a range of areas including safety practices, legal compliance, labour and human rights, modern slavery, anti-bribery and environmental impact. Our mission is to know, trust and support our supply partners to make our impact on global supply chains positive.

_Size guide



MEN'S MEASUREMENTS STANDARDS

A / NECK

Measure around your neck at the collar level. Remember to make allowance for comfort (usually 2 fingers behind the tape).

B / CHEST

It is important to stand naturally, keeping the tape level and straight. A firm (not tight) chest measurement should be taken.

C / WAIST

Measure around natural waistline, keeping the tape level and straight. Do not measure over your trousers.

D / INSIDE LEG

Take the measurement from the crotch to the top of the heel of the shoe.

WOMEN'S MEASUREMENTS STANDARDS

A / BUST

Measure around the body across the fullest part of the bust, keeping the tape level and straight.

B / NATURAL WAIST

Measure around the smallest part of your natural waistline, keeping the tape level and straight. Do not measure over your trousers.

C / LOW WAIST

Measure at a level approximately 4cm down from the natural waistline, keeping the tape level and straight. Do not measure over your trousers.

D / HIPS

Measure around the widest part of your hips (approximately 20-30 cm below the waist). In this position the tape measure should slide up, down and over the bottom.

_How to work out your shoe size

MEN'S EEE fit

AUS/UK	5	5.5	6	6.5	7	7.5	8	8.5	9	9.5	10	10.5	11	12	13	14	15	16
USA	6	6.5	7	7.5	8	8.5	9	9.5	10	10.5	11	11.5	12	13	14	15	16	17
European	39	39.5	40	40.5	41	41.5	42	42.5	43	43.5	44	44.5	45	46	47	48	49	50

WOMEN'S (For women's specific styles) D fit

AUS/USA	5	5.5	6	6.5	7	7.5	8	8.5	9	9.5	10	10.5	11
UK	3	3.5	4	4.5	5	5.5	6	6.5	7	7.5	8	8.5	9
European	35	36	37	37.5	38	38.5	39	39.5	40	40.5	41	41.5	43

The grey shaded boxes show the Men's to Women's equivalent sizes for unisex sized footwear. For example, a Men's AUS/UK 5 is equivalent to a Women's AUS/USA 7.

Please Note: Unisex sizes are wider fits for women than women's specific footwear.

SIZE: MENS PANT/SHORT – REGULAR	67R	72R	77R	82R	87R	92R	97R	102R	107R	112R	117R	122R	127R					
SIZE: MENS PANT – STOUT					87S	92S	97S	102S	107S	112S	117S	122S	127S	132S	137S	142S	147S	152S
FITS WAIST (CM)	67	72	77	82	87	92	97	102	107	112	117	122	127	132	137	142	147	152
FITS WAIST (IN)	26	28	30	32	34	36	38	40	42	44	46	48	50	52	54	56	58	60
PANT IN LEG SEAM – REGULAR	83	83	83	83	83	83	83	83	83	83	83	83	83	83	83	83	83	83
PANT IN LEG SEAM – STOUT					78	78	78	78	78	78	78	78	78	78	78	78	78	78

SIZE: MENS PANT–LONG	74L	79L	84L	89L	94L													
FITS WAIST (CM)	74	79	84	89	94													
FITS WAIST (IN)	29	31	33	35	37													
PANT IN LEG SEAM – LONG	88	88	88	88	88													

SIZE: MENS COVERALL – REGULAR	67R	72R	77R	82R	87R	92R	97R	102R	107R	112R	117R	122R	127R					
SIZE: MENS COVERALL – STOUT					87S	92S	97S	102S	107S	112S	117S	122S	127S	132S	137S	142S	147S	152S
FITS WAIST (CM)	67	72	77	82	87	92	97	102	107	112	117	122	127	132	137	142	147	152
FITS WAIST (IN)	26	28	30	32	34	36	38	40	42	44	46	48	50	52	54	56	58	60
FITS CHEST (CM)	77	82	87	92	97	102	107	112	117	122	127	132	137	142	147	152	157	167
IN LEG SEAM – REGULAR	73	73	73	75	77	79	81	82	82	82	82	82	82					
IN LEG SEAM – STOUT					72	74	76	78	80	80	80	80	80	80	80	80	80	80

SIZE: MENS COVERALL – LONG	74L	79L	84L	89L	94L													
FITS WAIST (CM)	74	79	84	89	94													
FITS WAIST (IN)	29	31	33	35	37													
FITS CHEST (CM)	89	94	99	104	109													
IN LEG SEAM – LONG	84	89	94	99	104													

MENS SIZE CONVERSION FROM ALPHA TO NUMERIC FOR LOWERS																		
WAIST MEASUREMENTS	67CM	72CM	77CM	82CM	87CM	92CM	97CM	102CM	107CM	112M	117CM	122CM	127CM	132CM	137CM	142CM	147CM	152CM
NUMERIC SIZE	67R	72R	77R	82R	87R	92R	97R	102R	107R	112R	117R	122R	127R	132R	137R	142R	147R	152R
ALPHA SIZE	2XS	XS	S	M	L	L	XL	2XL	2XL	3XL	4XL	4XL	5XL	6XL	6XL	7XL	8XL	8XL
						XL	3XL			5XL			7XL					

SIZE: MENS SHIRTS/POLOS/TEES/FLEECE	XXS	XS	S	M	L	XL	2XL	3XL	4XL	5XL	6XL							
FITS CHEST (CM)	82	87	92	97	102	110	118	126	134	142	150							

SIZE: MENS BUSINESS SHIRTS	37	38	39	41	42	43	44	46	48	50								
FITS NECK (CM)	37	38	39	41	42	43	44	46	48	50								

WOMENS PANT/SHORT/SHIRT	6	8	10	12	14	16	18	20	22	24								
FITS BUST	80	85	90	96	102	108	116	124	130	136								
FITS NATURAL WAIST (CM)	62	67	72	77	82	87	95	103	108	113								
FITS HIP	88	93	98	103	108	113	121	129	134	139								

WOMENS POLOS/TEES/FLEECE	2XS	XS	S	M	L	XL	2XL	3XL	4XL	5XL								
FITS BUST	80	85	90	98	106	114	122	130	138	146								



WORKWEAR GROUP

16 Omega Street
Albany
Auckland, New Zealand

TELEPHONE
Customer Service 0800 755 000

Published 2018

© KingGee